



FOXPRO FX5 **Digital Game Caller** **Instruction Manual**



FOXPRO Inc. 14 Fox Hollow Drive • Lewistown, PA 17044 • (717) 248-2507

www.gofoxpro.com

FOXPRO FX5

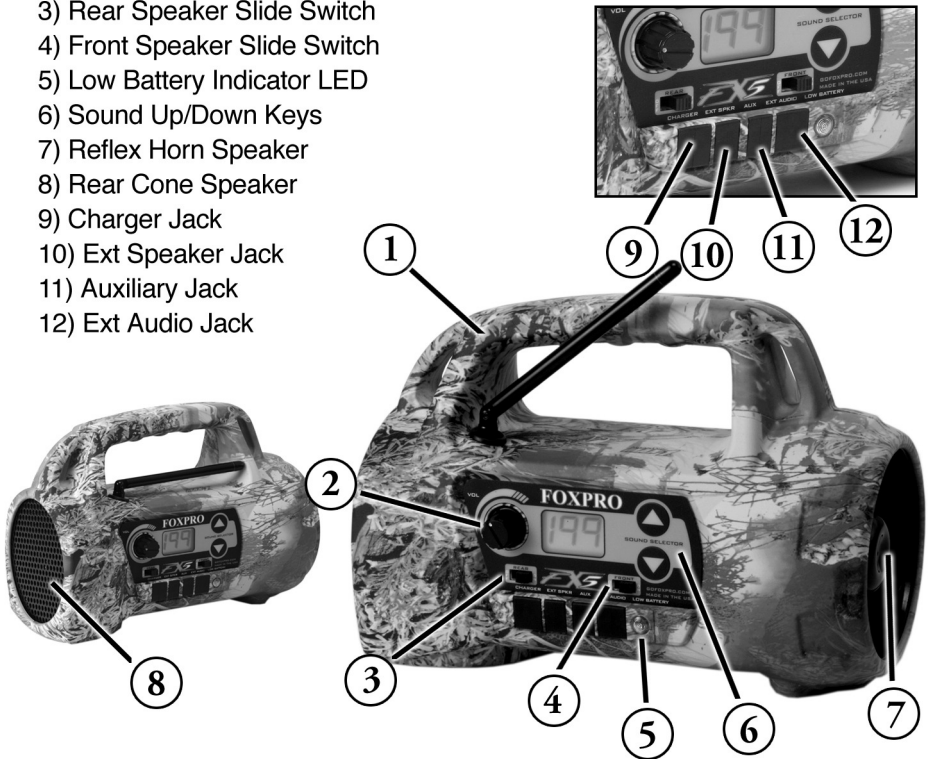
USING THE FOXPRO FX5 DIGITAL GAME CALL

MODEL FX5

Congratulations on the purchase of your FOXPRO FX5 digital wildlife caller. You have chosen a highly advanced product with reliability, ease-of-use, and features that are second to none. The FX5 is the product of an engineering effort that spanned several years. Please take this time to read and understand the information in this instruction booklet. This will ensure that you receive the maximum benefit from your new FOXPRO FX5.

FEATURES

- 1) Rugged injection molded ABS housing
- 2) On/Off switch-manual volume control
- 3) Rear Speaker Slide Switch
- 4) Front Speaker Slide Switch
- 5) Low Battery Indicator LED
- 6) Sound Up/Down Keys
- 7) Reflex Horn Speaker
- 8) Rear Cone Speaker
- 9) Charger Jack
- 10) Ext Speaker Jack
- 11) Auxiliary Jack
- 12) Ext Audio Jack



QUICK OPERATING GUIDE

Since the FX5 is shipped from the factory with no batteries installed, the first step is to install 8 “AA” batteries. These may be alkaline or rechargeable types. We strongly recommend high capacity NiMH rechargeable batteries over alkaline types for maximum performance, particularly when using loud volume levels. To install batteries, remove the battery door. The battery door is located on the side of the caller, and is held in place with a knurled thumb-screw. Orient the batteries as per the directions shown in each cavity within the holder. Note that the battery polarity alternates. Replace the battery door after the batteries are installed. The TX200 transmitter operates from a 9V battery. Please use a high quality alkaline battery. To install the battery, remove the battery compartment cover located on the rear of the transmitter. Connect the 9V battery to the connector plug, and orient the battery in the transmitter. Replace the battery compartment cover.



Make sure that at least 1 of the speaker selector slide switches is set to the right, or “ON” position. Click the On/Off/Volume switch to the on position. Please note that this switch is also the volume control when the unit is operated without the remote control. The further clockwise you turn the knob, the louder the unit will play. At this point, the LCD display on the FX5 will be flashing “- -”.

continued →

www.GoFoxPro.com



Press the up or down arrow keypad button on the FX5 to select a sound number. Once selected, release the button, and the sound will play. To select a different sound, simply press the up or down arrow buttons again to your desired sound. Please note that by pressing and holding either the up or down keys the numbers will ramp slowly at first, and then increase to a faster ramp speed.

To operate the FX5 by remote control, turn on the TX 200 transmitter by moving the switch on the rear of the transmitter to the right, or "ON" position. The graphic LCD display will illuminate and display the first 6 sounds stored in the play list, starting with 000. Select the sound you wish to play by turning the rotary selector knob on the top of the transmitter either clockwise, which will scroll up, or counter-clockwise which scrolls down. Please note that when scrolling up or down, the play list will change in pages. When the sound desired appears in the displayed list, highlight the sound, and press down on the rotary selector knob. You will notice that the number associated with that sound will appear in the bottom text line. This text line also displays the current channel setting (which should be B from the factory), a mute indicator, volume setting, battery monitor, and timer. The top text line displays the preset buttons. For more information on the text lines, see the TX200 features section of this instruction manual. Now that you have selected the sound to be played, simply bring the volume up to your desired level by depressing the volume up arrow. As you depress the volume up arrow, note that the volume setting number in the bottom text increases. To mute the sound, simply press the mute button. The M will appear in the bottom text. The mute also serves as a pause feature, meaning that when you un-mute the sound again, it will start playing where you muted the sound instead of starting over again. To change the sound, simply highlight your next sound preference, and depress the rotary selector knob. Your sound will instantly change. Use the "AUX" button to activate a device such as a decoy or camera connected to the FX5 "AUX" jack. When you are finished, turn the TX200 transmitter off by moving the switch to the left, or "OFF" position. Should you forget to turn off the TX200 transmitter when you are finished, it will shut down after 2 hours of non-use. Turn off the FX5 by rotating the On/Off switch to the off position. Mute is not off. Some battery drain continues in "MUTE" mode.



ABOUT THE FOXPRO FX5 SPEAKERS

This caller incorporates 2 different types of loudspeakers. The front speaker is a high efficiency horn with maximum sensitivity in the frequency range necessary to reproduce small animal distress sounds. Distress sounds of rabbits, small rodents, birds, canines, and many others are best reproduced by using the front horn only with the rear cone speaker turned off. This will also ensure maximum battery life as playing both speakers requires almost twice as much battery power. The rear cone speaker is best suited to sounds that have significant lower frequency content. These sounds would include bear growls, mountain lion roars, certain owl hoots, and some other large mammal sounds. The rear speaker, however, is not as efficient as the front horn. Because of this, it will not play as loud as the horn. Understand that not all calling sounds will benefit greatly from playing both speakers at once. If you elect to do this, remember that battery life will be reduced.

BATTERIES AND CHARGING

Your FX5 operates on 8 "AA" batteries. For optimal performance and run times, we recommend high capacity 2500 mah NiMH (Nickel Metal Hydride) rechargeable cells rather than alkaline types. When you ask your FX5 caller to play at extremely loud volume levels, the current demand on the batteries is much more than alkaline cells can deliver. Consequently, the run time of these batteries can be very short. The Zinc Carbon so-called "Heavy Duty" cells are expressly NOT recommended at all. The performance of your FX5 will be much better with high capacity NiMH batteries.

To install batteries, remove the battery door which is located on the side of the caller. The battery holder is located beneath this door. Be careful to observe battery polarity! Note that the cell polarity alternates. Batteries may be damaged if installed backwards. Double-check polarity before reinstalling the battery door. NiMH batteries should be charged before first use.

CAUTION: Never attempt to charge batteries not intended to be recharged! This includes both Zinc Carbon and alkaline cells. The resulting damage can be serious, and will not be covered by the warranty. For maximum charge efficiency, we recommend charging your FX5 in temperatures ranging from 40°F to 85°F (5°C to 30°C). To charge the batteries, connect the FOXPRO FX Series charger to the FX5 charge jack. The green "Low Battery" LED will illuminate to indicate charge activity. Charge time will vary from 1 to 7 hours depending on the battery state of discharge. The "Low Battery" LED will extinguish to signal that the charge cycle is complete.

continued →

www.GoFoxPro.com



Do not allow the charge time to exceed 8 hours. The batteries need to be recharged when the “Low Battery” LED is blinking while the FX5 is in use. If this warning is ignored, the FX5 will abruptly shut off and display “LO” on the LCD display. Battery run time is directly related to how loud you operate the FX5. Using both speakers at the same time rather than only the most appropriate one will have a negative impact on run time. With one speaker playing, expect 6 to 15 hours of run time, depending on the loudness setting. With both speakers playing, expect 3 to 10 hours. Remember that very loud volumes are rarely needed, as animals hear much better than we do.

“AUX” JACK FUNCTION

The FX5 is equipped with an auxiliary jack labeled “AUX”. The purpose of this jack is to allow for the connection of certain external devices, such as the FOXPRO Jack-in-the-Box Decoy, and to be able to turn these on and off with the TX200 remote control transmitter. However, there are some strict electrical limits involved with this jack. If these limits are exceeded, damage to your FX5 will result. This damage is not covered by the warranty. The electrically inclined will want to know that the jack is connected to the drain of an internal Field Effect Transistor with a maximum current rating of 2 Amperes. The “tip” polarity of the 3.5mm jack is positive, while the sleeve is negative. If the external device is connected with the polarity reversed, an internal protection diode within the FET will conduct, causing the device to stay on constantly. The maximum voltage applied to this jack must never exceed 15 volts. Typical uses for this jack would be to control the FOXPRO Jack-in-the-Box Decoy, or to start and stop a video recorder. Instructions on connecting various devices to the “AUX” jack are beyond the scope of this manual. You are urged to seek help from a knowledgeable professional before connecting any unapproved device to this jack. Remember that damage to your FX5 caused by improper use of the “AUX” jack is not covered by the warranty, nor will FOXPRO be liable for damage to any device connected to this jack. Typical uses for this jack would be to control the FOXPRO Jack-in-the-Box Decoy, or to start and stop a video recorder.

USING THE EXT AUDIO JACK

This 3.5mm jack allows for the connection of an external playback device such as a cassette player, CD player, MP3 player, or other similar products. Connect a 3.5mm patch cable (available from FOXPRO) from the headphone or speaker jack of the external player to the "EXT AUDIO" jack on the FX5. This will disable the internal sounds and cause the FX5 to blink "- -". Turn the volume control of the external player to a moderate level, and then control the volume from the FX5 volume control or from the TX200 transmitter. With the remote control, you can adjust the volume and mute the sound. You may need to experiment with the volume setting on the external player to ensure that enough drive is obtained without excessive distortion. Once the patch cable is removed from the FX5, any of the internal sounds may be selected by using the sound up or down buttons.

USING EXTERNAL POWER SOURCES

Caution! Never connect anything other than a FOXPRO approved charger to the charge jack without first removing the internal batteries! Doing so will surely cause damage to the FX5 as well as to the batteries. This damage is not covered by the warranty. The design of the FX5 permits the use of certain external power sources, so long as some precautions are observed. The 8-cell internal battery pack will serve about 98 percent of the users about 98 percent of the time. This makes for a caller that is compact and lightweight, highly portable, and has very good battery life. However, we recognized that there may be times when extended run-times and additional loudness are more important than light weight and absolute portability. You can have the best of both worlds with the FX5! By connecting a large external 12-volt battery to the charge jack, you can operate the FX5 and obtain run-times measured in days rather than hours. The internal NiMH battery pack supplies 9.6 volts to the power amplifier, while an external battery can supply up to 15 volts. This additional voltage will offer an increase in power output to the speakers, equating to additional loudness. But there is a double-edged sword involved here. By giving the user the ability to get more power from the amplifier, there is also a much greater chance of causing damage to the built-in speakers. For this reason, we recommend using one of our large external speakers, such as the SP108, if you really need to, say, call crows from the next county. Not only are these speakers more efficient, they will have no problem dealing with the extra power. If you must use extreme volume without the external speaker, use only the front horn. The rear cone speaker is somewhat more delicate than the front horn.

continued →

www.GoFoxPro.com



Please be careful with the volume control, and remember these cautions when using an external battery:

- 1) **NEVER** connect an external battery to the charge jack without first removing the internal batteries.
- 2) **NEVER** connect a battery or power supply capable of delivering more than 15 volts to the charge jack.
- 3) **NEVER** charge the external battery while it is connected to the FX5.
- 4) **ALWAYS** use a 5 amp (max) fuse in the positive battery lead.
- 5) **ALWAYS** act responsibly with the volume control to prevent speaker damage.

For maximum possible loudness, use one of our optional external speakers, such as the SP108.

TX200 REMOTE CONTROL OPERATION



Features

- 1) On / Off Switch
- 2) Battery Compartment Cover
- 3) Rotary Sound Selector Knob
- 4) Full Graphic LCD Display
- 5) 4 Custom Preset Buttons
- 6) Sound Reprogramming Jack
(on side panel, not visible in photo)
- 7) Lanyard Loop

The transmitter supplied with the FX5 is our new TX200 transmitter. New features of this transmitter include a full graphic display, eliminating the need for printed sound lists, 4 custom preset buttons that make your favorite sound and volume levels available at the touch of a button,

a volume and mute indicator, a recall button, an elapsed timer, and a rotary sound selector knob for ease of changing sounds. The TX200 transmitter operates on a standard 9-volt battery. Please use a high quality alkaline battery. To install the battery, remove the battery compartment cover located on the rear of the transmitter. Connect the 9V battery to the connector plug, and orient the battery in the transmitter. Replace the battery compartment cover.

TURNING ON THE TX200

To turn on your TX200 transmitter, simply turn the slide switch to the "ON" position. This switch is located on the back of the transmitter. Be sure to turn the switch to the "OFF" position when you are finished using the transmitter so that unnecessary battery drain is prevented. Should you forget to off the transmitter when you are finished, it will automatically shut down after 2 hours of non-use.

GRAPHIC LCD DISPLAY

When you have turned on the TX200 transmitter, the display will illuminate, displaying the stored play list. Also displayed are the battery monitor, timer, channel, volume number, and presets.

Shown to the right is a typical display.

Note that the display shows 8 lines of text. The first and last lines are status lines, while the center 6 lines show 1 page of the play list. The top line shows the sound numbers that have been stored in the 4 presets. If you have not assigned these presets (see Setting Presets), they will display as 000. The left-most number corresponds to P1, while the number on the right shows P4.



continued →

Even though these preset sounds have a specific volume number stored with them, this volume number is not displayed. The bottom line shows, from the left, the channel selection (A, B, or C), the current sound number, mute status volume number, battery monitor, and timer.

SELECTING SOUNDS

The display will show 6 of the sounds at any given time. You can scroll through pages of 6 sounds (up or down) very quickly by turning the rotary sound selector knob. This rotary sound selector knob is used to highlight sounds on the display, change the page being viewed, and to send the selected sound to the FX5. Clockwise rotation of the knob scrolls the highlight bar up the page, while counter-clockwise rotation moves it down. Once the bar reaches the top of the 6 displayed sounds, the next movement of the knob in the same direction will cause the sound pages to increment, showing the next 6 sounds. Continued clockwise rotation will cause the sound pages to advance at a rate of 10 pages (60 sounds) per revolution. Once the sound you wish to play appears in the display, turn the rotary sound selector knob counterclockwise to highlight that sound. Now push down on the knob in order to select the sound, and to have it transmitted to the FX5 for play. Counterclockwise rotation of the knob will cause the pages to decrement, showing the previous 6 sounds. If you wish to start your current sound playing from the beginning, simply depress the knob again. To switch sounds, simply select and highlight your desired sound, and depress the knob. Selecting sounds is quick and easy. As you can see, even with 200 sounds programmed, you are never more than 2 revolutions of the rotary sound selector knob away from any sound.

SETTING THE VOLUME

When the TX200 is first turned on, the volume setting is preset to 00, as the display will indicate. Once you have selected and transmitted your sound to the FX5, simply depress the volume up button on the transmitter to your desired level. Note that you can depress and hold down on the volume button to continue to ramp, or you can continue to press and release the button to ramp. Depressing the volume buttons will cause the volume number to change in the display from a low of "0" to a high of "40". These

changes are transmitted to the FX5 in real time, causing the volume to ramp up or down. Note that in order to achieve an optimal ramp speed, the volume changes in 2 step increments while the sound is playing. While the mute is active, however, the volume can be selected in single steps. The volume numbers are important, as you will begin to identify your preferred volume settings, and with the FX5 placed away from you, it gives you the ability to know exactly what volume the FX5 is playing at. Without this, you have no idea how loud or soft your unit is playing.

MUTE

To mute the current sound that is playing, simply depress the mute button on the TX200 transmitter. Mute mode is indicated by an “M” appearing in the bottom status line. To un-mute, simply depress the mute button again. The mute feature also serves as a pause function. When you mute the current sound being played and un-mute again, the sound will begin playing at the point where you muted it. If you wish to play the sound from the beginning when you un-mute, simply depress down on the rotary sound selector knob before un-muting. While muted, you can also change your sound, so that when you un-mute, the new sound will play.

AUX

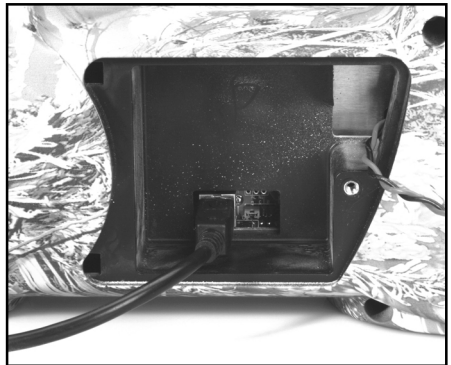
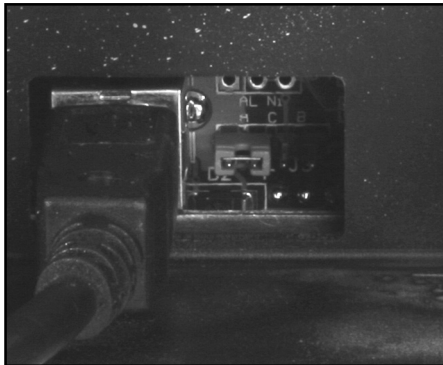
This button is used to operate an external device that is connected to the FX5, typically the FOXPRO Jack-in-the-Box Decoy. Depressing the AUX button will begin operation of the external device. A second press of the AUX button will cease operation. For more information on the AUX function, see the “AUX” Jack Function in the beginning of the manual.

RECALL

The recall button will allow the last previous sound and volume setting to be recalled and played. For example, let's say you just switched your sound from a rabbit distress at volume 18 to a coyote pup distress. Now, you bring the volume up on that coyote pup distress to volume 29. By depressing the recall button, your sound will switch from the coyote pup distress at volume 29, back to the rabbit distress at volume 18. The recall button will also work with the presets.

CHANNEL SELECTION

The TX200 has been designed to be able to operate up to 3 different FOXPRO units. The transmitter can be set to an operational channel that will allow operation of the 416, 532, and FX3 callers. Because these other callers do not support some of the new FX5 functions, they must be operated on channel "A". Channels "B" and "C" are reserved for the FX5. Functions that are not available while in channel "A" operation include the volume number indicator, mute indicator, displayed sound name, and the 4 custom presets. Sound number selections available in channel "A" are "00" through "31". The standard default channel for FX5 operation is "B". Channel "C" is also available for operation of the FX5 if the caller is set to that channel. On the FX5, the channel selector jumper is located in the battery compartment, to the right of the USB port. To change the channel on the FX5, use small pliers to get a firm grip on the jumper. Be careful not to drop the jumper inside the FX5. Reposition the jumper to the new channel that you are changing to. Again, the FX5 should be set to the "B" channel from the factory, but can also operate from the "C" channel. If your FX5 is set to the "B" channel, the TX200 must be on the "B" channel as well. The current channel is displayed on the bottom status line of the TX200 transmitter. To change the TX200 channel of operation, turn on the transmitter, and depress the P3 and P4 buttons simultaneously. You can toggle between "A", "B", and "C" channel operation. Remember that the TX200 will not operate the FX5 on channel "A".



PRESETS

Four preset buttons are provided so that you can program your favorite sounds along with a volume number for immediate recall. The stored sound number of these presets is shown on the top status line of the TX200 graphic LCD display. The associated stored volume number is not displayed. To switch instantly to any of these presets, simply press and release the appropriate button. Note that if mute is active, the preset sound will not play until mute is deselected. To program the presets:

- 1) Press and hold the P1 button for 3 to 5 seconds until the top status lines reads "SEL SND/ VOL PRESS P1".
- 2) Select the sound to be programmed by rotating the sound selector knob until the correct sound is highlighted. Now push the volume up or volume down buttons until the desired volume number appears on the bottom status line.
- 3) Depress and release the P1 button. This will store the sound and volume number. The selected sound number will appear in the P1 position on the top status line.
- 4) Repeat steps 1 through 3 for the remaining presets.

Note that the presets must be reprogrammed each time a new play list is downloaded into the TX200. Any selected preset will be highlighted on the top status line. Presets are not available in channel "A" operation. Preset buttons can be changed as often as you like.

TIMER

The TX200 transmitter features a timer displayed on the bottom status line. This makes it handy for determining length of stands, and to determine respond times of incoming animals. When your TX200 is turned on, the timer begins counting. The timer displays minutes and seconds up to 99:59. Once this time is reached, the timer rolls over to 00:00, and commences counting. The timer can be reset at any time by simply pressing the RECALL and P3 buttons simultaneously. Once you turn your TX200 transmitter off, the timer stops counting.

BATTERY MONITOR

The TX200 transmitter also features a very effective battery monitor on the bottom status line. The TX200 transmitter operates on a standard 9-volt battery. Please use a high quality alkaline battery. Battery life can approach 175 hours. Watch the battery monitor and replace the battery before it becomes completely depleted.



OUT OF SYNC OPERATION

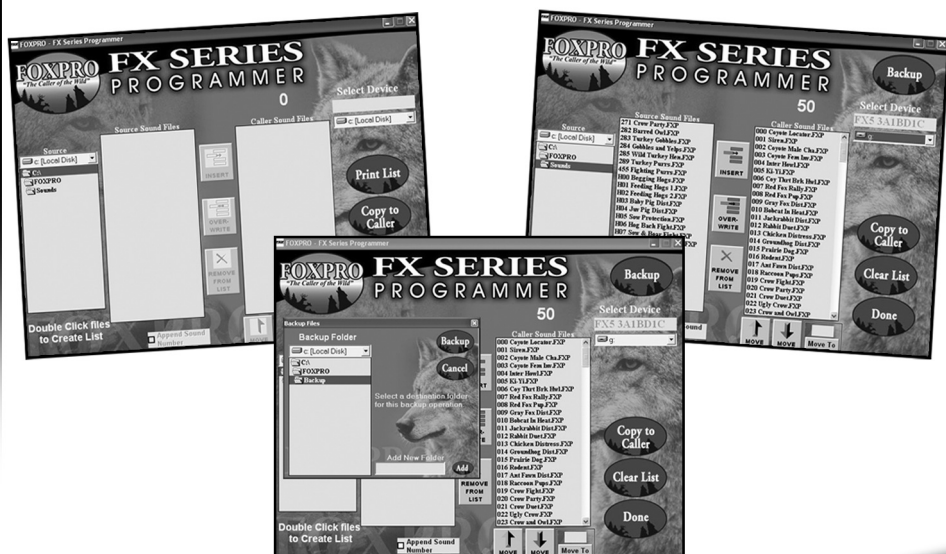
If you turn off the TX200 transmitter while operating the FX5 caller, it will cause an out of sync operation. In other words, the FX5 is still playing the last sound, but when you turn the TX200 back on, it will not display the sound or volume setting currently playing on the FX5. To get back in sync, simply depress another sound (or the same sound) and volume setting, or a preset, and the unit will recover.

REPROGRAMMING SOUNDS ON YOUR FX5

The FX5 comes standard with a USB 2.0 port built in (no reader / writer is necessary), which makes reprogramming or adding sounds to your FX5 easier than ever. A computer is required in order to reprogram your sounds. The FX5 can be reprogrammed by using personal computers equipped with Windows operating system version 98SE or later, or a Macintosh computer with an operating system of 9.X or later. Please note that if operating from Windows Version 98SE, you will need to download a driver that will allow your operating system to work with your FX5. This driver is available at no charge from our website, www.gofoxpro.com, under Programs / Utilities, and is called "Windows 98 SE USB Utility Driver". If you do not have access to a computer, sounds can be reprogrammed or added for a fee by sending your FX5 to FOXPRO Inc.

Downloading the FX Series Programming Utility:

We have developed a utility program that simplifies the reprogramming of sounds on your FX5. This utility is available for download at no charge from our website. Simply go to www.gofoxpro.com, and double click on Programs / Utilities. Once there, double click on the utility program called FOXPRO FX Series Programming Utility, select Save, and choose the location to store the .exe file. We recommend saving it to your Desktop. The name of the file on your Desktop (if you choose your Desktop as the location to save) will be labelutil.exe. Next, double click the labelutil.exe icon, and select Run. At the next screen, select OK. On the next screen, click on the button where prompted (the button is the one that resembles a computer), and then click on the continue button. This should complete the setup of the FX Series Programming Utility. Note: The icon on your desktop is only a .exe file used to download the file to your computer. Once you have completed installation of the program, this icon can be deleted. The actual program will be in your program files on your computer, and is called FX Series Programmer.



Programming your FX5 with the FX Series Programming Utility:

To gain access to the FX5's USB port, remove the battery compartment door by unscrewing the knurled thumbscrew. Remove the battery tray from your FX5. The USB port is located to the rear of the battery compartment. If you choose, the batteries can be removed for easier access (the FX5 can be reprogrammed with or without batteries). Connect the provided USB cable between this port, and the USB port on your computer. Once the connection is made, your computer should recognize the FX5 as a removable drive. If using the Programming Utility, double click the folder on your desktop, or go to your programs folder and open the FX Series Programmer. You will be prompted to make a backup of your sounds. Once you select OK, you will be taken to the programming utility. Your next step is to select the proper USB drive for the FX5. This is marked as Select Device, located in the upper right portion of the programming utility. Scroll through the drives, and select the proper drive. This drive varies on different computers. Once you have selected the proper drive, your list of sounds currently on your FX5 will appear in the right vertical window. You will now notice that a new button appears above the Select Device window that reads "Backup". If you have not made a backup of your sounds, simply click on this button. The programmer by default will backup your sounds to a "FOXPOR" folder, and a sub folder "Sounds". This is also a good folder to use to add new sounds prior to adding sounds, or reprogramming your FX5. You can also create sub folders for different species, if you choose, rather than to have all sounds located in one folder. Once your backup is complete, you are ready to reprogram your FX5. Start by selecting the "source" folder of your new sounds, located on the left hand side of the programmer screen. This is the folder where your sounds are located. Double click on the C: / prompt, and locate the "FOXPOR" folder. The Sounds sub folder should show up, assuming that you have used this folder to store your sounds. If this is not the folder that your sounds are located in, select the proper folder. Once the proper folder is selected, double click the folder. The sounds should now appear in the left side column, called "Source Sound Files". Now, determine the position that you would like to add new sounds to your FX5. For example, if you would like to add Jackrabbit Distress to your FX5, highlight the sound in the left side column. Please note that if this sound does not have a 3 digit number and a space located at the beginning of it, you must check the Append Sound Number box, located below the left column. By selecting this box, the sound name will not be shortened. If there is a 3 digit number and a space before the name of the sound, there is no need to check this box. The first four characters will be truncated, or ignored, by not selecting this

box. Next, select the position in the right column where you would like to add the sound. If you want to overwrite the sound in that position, then click on the overwrite box, located between the two columns. This will replace the current sound in that position. Please note that the sound that was located in that position will be deleted. If you choose to instead insert the sound in that position, and move all other sounds down one, click the insert button. This will add the sound in that position, and not overwrite the current sound. If you would like to remove sounds from the right side column before adding new ones, simply highlight the sound, and click on the "Remove From List" button, located between the two columns. If you would like to relocate a sound in the right sound column, you can highlight the sound, and then insert the position number that you would like to move it to in the "Move To" box, located below the right side column. This will relocate the sound to your designated number. You can also highlight the sound that you wish to move on the right column, and then click on the up or down arrows below the right side column to move the sound one position at a time. If you would like to reset your list at any time, simply click on the Clear List button, located on the right side of the screen. This will reset the list to its initial sounds. Once you have completed reprogramming your FX5, click on the "Copy to Caller" button located on the right side of the screen. Your sounds will now be reprogrammed to your FX5. **IMPORTANT NOTE:** The FX5 will NOT play sounds with the ".wma" suffix. You must first convert these files to .wav or .mp3 for use with the FX5. Although you may store .FXP sounds on your computer for later use, they cannot be played on your computer, or on any audio player other than a FOXPRO FX Series Caller.

DOWNLOADING A PLAYLIST FROM YOUR FX5 TO YOUR TX200

Program your sounds into the FX5 as outlined in the instruction manual. Make certain that you do not use the same number for more than one sound! Note that the transmitter can only display 21 characters per line. The first 3 characters must be the sound number, from "000" through "199". Place a space between the sound number and the sound name. 17 characters remain for the sound name. Although the sound name can have more characters, the TX200 will only display the first 17 characters. Any additional ones will not be displayed. To download the playlist from the FX5 to the TX200, follow these steps:

continued →

www.GoFoxPro.com



1. Turn the power off on both the FX5 and the TX200. Connect the stereo patch cable from the FX5 "Aux" connector to the connector on the side of the transmitter.
2. Turn on the TX200 power switch. Follow the instructions on the display:
3. Select the channel. For use with an FX5, select channel "B". Push the send button by depressing the sound selector knob.
4. While depressing the Down arrow button on the FX5, turn on the power switch.
5. Wait for the download to complete. This takes about 2 to 3 minutes. Wait for the FX5 display to reach "199" even though you may be programming fewer sounds.
6. You may watch the progress on the FX5 display, and on the TX200 progress bar.
7. The display will prompt you when the download is complete.
8. Remove the cable from both units. Turn off the power on both units, and then turn both back on. The units are ready for operation.

MAXIMIZING YOUR REMOTE CONTROL RANGE

Your FX5 includes FOXPRO's long range TX200 remote control. In order to maximize your remote control range, here are a few tips that you should follow:

1. Elevate your FX5. This step is the most important one to follow to maximize the range of your remote control. If your unit is raised off of the ground, the signal strength received by your FX5 will be maximized. In general, more elevation will yield better performance. Try setting your unit on a stump, fencepost, or hang it from a tree limb, where possible.
2. Keep all antennas vertical. When setting up your FX5, be sure to raise the antenna to the vertical position, and when operating your TX200, hold the transmitter with the antenna in a vertical position. Do not point the antenna toward the FX5.
3. Have a clear line of sight to the FX5. Foliage and other objects between the transmitter and the FX5 can greatly decrease the remote range.
4. While operating your TX200, be sure to keep the transmitter away from your body, and also away from guns and shooting sticks. These objects can absorb energy from the transmitter and can also detune the antenna, resulting in decreased transmitter signal strength.

Failure to follow these tips will result in decreased performance of your remote control. Also, please be aware that even if all of the above tips are followed, it is possible that the performance of your remote control could be limited in certain areas due to factors beyond our control, such as proximity to noisy power lines, two way radio transmitter sites, and other areas of high RF energy.

ACCESSORIES



**FX Series NiMH Batteries
and Charger**



Fast Charger



**Jack-in-the-Box
Decoy**



**Custom
Carry Case**



SP108 Speaker



SPFR1 Speaker



SP55 Speaker



**50 ft. External
Speaker Cable**

WEBSITE FEATURES

Check out a few of the many features that are available from our website.

Sound Library

Preview a large selection of sounds that can be downloaded from our website.

Field Staff

Meet FOXPRO's Field Staff. Like our products, these guys are the best in the industry.

Forums

Get interactive with our online forum to receive news, product releases and general inquiries.

Programming Utility

Back up your original sounds, load new sounds and manage sounds on your unit.

Tips and Tricks

Find some Tips and Tricks for making the most out of your FOXPRO product.

New Products

Keep up-to-date on all of the new products and upgrades available from FOXPRO.

www.GoFoxPro.com

Limited Warranty Statement

Your FOXPRO wildlife caller is warranted to be free from defects in materials and workmanship that diminish its usefulness for a period of five years from date of purchase. Return the unit prepaid and packaged securely **along with proof of purchase** to the address below. Include a note describing the defect or problem. This limited warranty is void if the unit is physically damaged, used in a manner contrary to its intended use, or otherwise abused, either intentionally or unintentionally. Also specifically excluded are batteries and damage caused by attempts to charge batteries not intended to be recharged, and water damage.



FOXPRO Inc. 14 Fox Hollow Drive • Lewistown, PA 17044 • (717) 248-2507

www.gofoxpro.com